



MES ENGINEERING TECH



COMPANY PROFILE





MES Engineering Tech
MAIN OFFICE
Dhaka Road,
Chandpur Bhaban,
Gazipur City
Corporation,
Gazipur – 1703.

PHONE NUMBERS:

+088 -01935101538
+088 - 01749493500
+088-01975101538

WELCOME Message from the CEO

MES Engineering Tech is a highly diversified, multidisciplinary contractor and an industry leader in Engineering works. Our team has earned its place in today's competitive market through a combination of our core beliefs and the consistent delivery of superior services and quality end products and works. The individualized care and unwavering attention that we bring to all of our projects are deciding factors in why our clients continuously choose us.

We understand that it takes more than a qualified provider to win the customer's confidence, especially when it comes to complex or high-value projects. That is why, from the very beginning, our company has been built upon a strong foundation of integrity, honesty, safety, and quality. We build trust-based, collaborative relationships with our clients and industry partners. This is what sets us apart and what helps us provide continuous customer satisfaction, win repeated business and establish long-term business connections.

In the course of the years in this industry, we have progressively advanced our capability- ties towards a full scope of diversified and specialized services, which we provide today. We assist our clients at every stage of their project's lifecycle.

MES crew of skilled and experienced professionals combined with our unparalleled dedication and complete client focus have been a sure way to make every project a success.

Engr. Abu Sayed.

CEO, MES Engineering Tech





CONTENT

S/L	Contents	Page No
1	ABOUT US	7
2	MISSION & VISION	8
3	SAFETY	9
4	OGRANOGRAM	10
5	SERVICES OVERVIEW	12
6	TURNKEY TANK AND EPC TERMINAL SERVICES .	13
7	STORAGE TANKS	14
8	STORAGE TANKS REPAIRS AND MAINTENANCE	15
9	MECHANICAL AND PIPING	16
10	STEEL FABRICATION	17
11	CONSTRUCTION	18
12	FABRICATION	19
13	FIRE PROTECTION SYSTEMS	20-23
14	FIRE DETECTION SYSTEM	24
15	CERTIFIED AND QUALIFIED MANPOWER	25
16	MAN POWER AND MACHINE TOOLS	26
17	SUMMARY OF CLIENTS	27
18	TRADE LICENCE	28
19	TIN CERTIFICATE	29



OUR COMPANY

ABOUT US



OUR PROMISE TO YOU

“To provide you with real value, outstanding service, and exceptional performance regardless of the size or complexity of your project.”

MES is a multidisciplinary industrial contractor serving the Bangladesh. We provide real value to all of our clients by achieving the best in the industry results and the highest level of professionalism in every service, project, and structure we deliver. Our managing team strives to sustain an environment where all of the team members continuously better their skills and maintain the highest level of proficiency in their respective areas.

It was this consistent development of competence and talent that fueled our growth over the years as the scale of our projects increased in both size and complexity.

Today we are an industry leader with our highly qualified team of experienced professionals offering a comprehensive set of services. Our expertise covers the full scope of every stage in the lifecycles of the industrial construction projects.



ADVANTAGES OF HIRING MES Engineering Tech SERVICES

- TOP-NOTCH FABRICATION EQUIPMENT
- PROFESSIONAL ENGINEERS & DETAILERS
- R STAMP HOLDER
- WELDING SPECIALISTS
- LOW OVERHEAD
- GENERAL CONTRACTORS
- INDIVIDUALIZED SERVICE
- SUB-CONTRACTOR SOURCES



VISION

To become the most respected and prominent service company in our industry - known for our dedication to excellence in everything we do.

To be recognized as the industry leader due to our track record of exceptional quality and service.

To have the industry's best lineup of professional team players who are dedicated to safety, quality and take pride in all their achievements big and small.



MISSION

To bring the industry a new standard of quality, craftsmanship, safety, and technical support at a competitive price, while making customer satisfaction our top priority. To work diligently to ensure our clients that their project has our full attention and absolute focus at all its stages.

To foster work environment supporting professional development, individual proficiency, and team integrity.



SAFETY

MES is dedicated to protecting and preserving the working environment in a responsible manner - we are very proud of how we work and our safety track record.

When it comes to safety, our philosophy is that any successful job or project is directly attributed to exceptional performance and well-planned services. Our unmatched safety record is a result of avoiding less than desirable workmanship and errors associated with rushing, stress, and poor work conditions. The majority of incidences are attributed to human error, thus minimizing or eliminating such conditions results in fewer incidents.

MES management is committed to continuous development and improvement of safety programs to protect our team members on all job sites. We also acknowledge that our company's staff and

professionals are our biggest asset. We are proud of our safety record, and continue to strive to make our facilities and job sites safer. We will never compromise the safety of our staff, equipment or our customers.

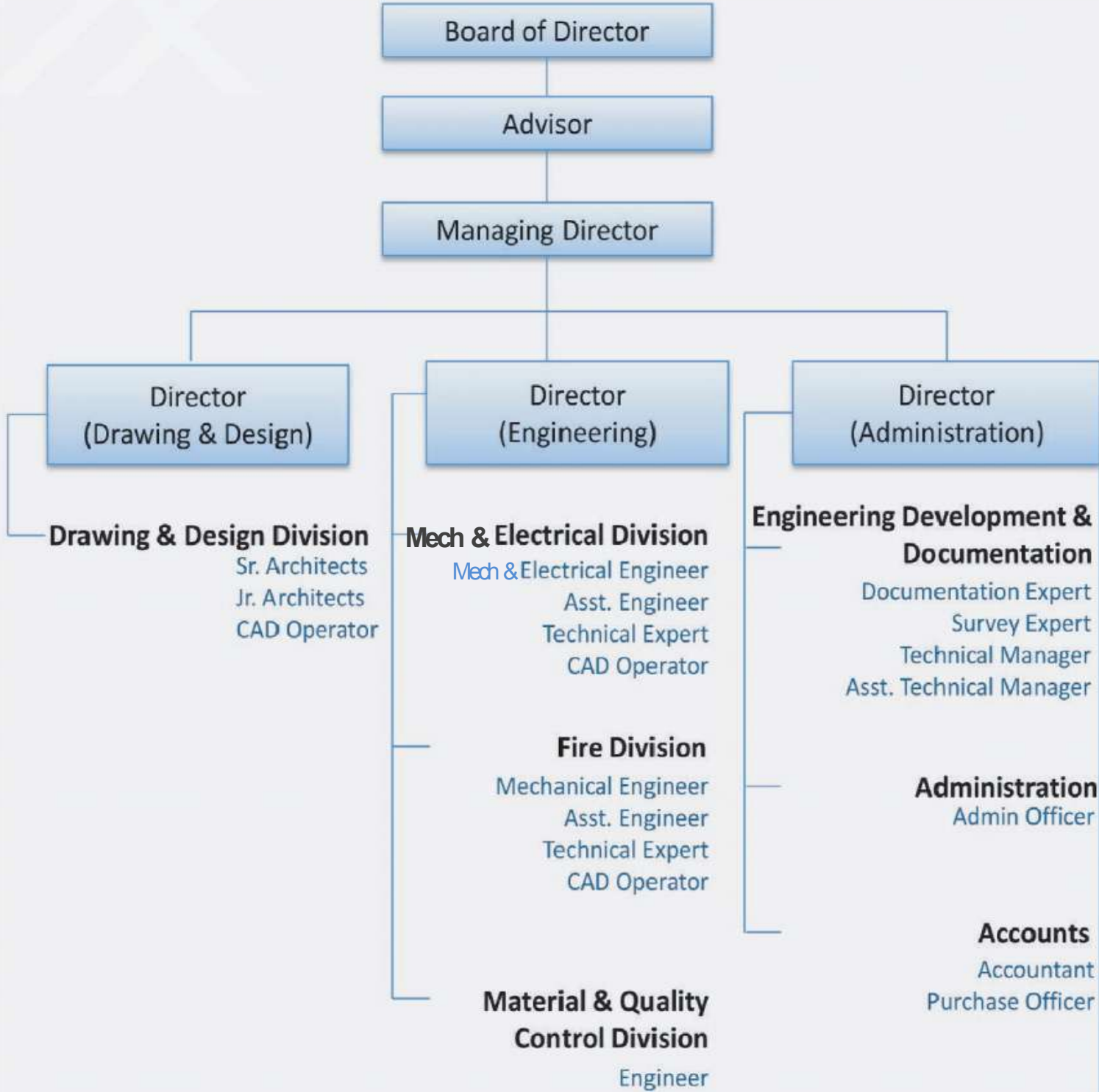
MES adheres to all Occupational Safety, Health Compliance associated with OSHA and our internal proprietary safety program. This compliance assures our company members and clients that all business practices are performed in a safe manner, matching our corporate values and practices.

OUR INTERNAL SAFETY PROGRAM INCLUDES:

- ◆ **A daily job hazard analysis meetings.**
- ◆ **All staff and team members are trained to look at safety before beginning any task to reduce risk.**
- ◆ **All team members are routinely trained and updated on the best industry safety practices.**
- ◆ **All new team members are extensively trained before beginning as an active member of MES team.**
- ◆ **All team members are rewarded for operating in a safe and productive manner.**
- ◆ **All team members hours are tracked diligently to prevent fatigue and mitigate the risks related to exhaustion or stress.**



ORGANOGRAM



An aerial night view of an industrial facility, likely a refinery or chemical plant. The scene is dominated by several large, cylindrical storage tanks illuminated by bright lights. In the background, there are industrial buildings and a city skyline under a dark sky. The overall color palette is a monochromatic blue, with the text 'OUR SERVICES' in a bold, orange font centered over the image.

OUR SERVICES

SERVICES OVERVIEW

Our goal is to continue the development of our long-term business relations by delivering quality workmanship, efficient production at a competitive cost, while making customer satisfaction our top priority.

MES Engineering Tech is a versatile industrial contractor company providing a full scope of general and specialized services provided by highly skilled and experience staff.

We incorporate multiple ASME qualified procedures, always adhering to the strictest fabrication guidelines and safety measures that meet the industry's highest standards.

Besides the expert structural steel fabrication and erection services we offer the multitude of additional services such as: design - build projects, pre-engineered structures, custom structural fabrication, open web joist buildings, metal decking and siding installation, plate fabrication, platforms, ladders, handrails, bending, drilling, punching, miscellaneous fabrications and more.



SERVICE AREAS

- **TURNKEY TANK AND EPC TERMINAL SERVICES**
- **STORAGE TANKS**
- **STORAGE TANKS REPAIRS AND MAINTENANCE**
- **MECHANICAL AND PIPING**
- **STEEL FABRICATION AND ERECTION**
- **BOILERS REFURBISHMENT AND OVERHAUL**
- **PRESSURE VESSEL REPAIRS AND ALTERATION**
- **CONSTRUCTION and FABRICATION**
- **SURFACE PREPARATION AND CLEANING**
- **ELECTRICAL AND INSTRUMENTATION**
- **FIRE PROTECTION SYSTEMS**
- **CERTIFIED AND QUALIFIED MANPOWER**



TURNKEY TANK AND EPC TERMINAL SERVICES

MES Engineering services upstream production, midstream pipe-line, downstream petroleum refining, storage terminals, power plants, chemical industries and government projects.

We offer in-house design, engineering, fabrication, and erection work for single or complex projects in terminal facilities.



MES Engineering customers are confident hiring our services thanks to our highly competent in-house engineering, comprehensively trained superintendents, and skilled craftsmen. All this combined with our vast experience and dedicated management enables us to accomplish our corporate and government clients' goals. MES maintains fully staffed construction management and field service departments, along with post-job service and advice to ensure continued satisfaction with our services.

At every stage of their project, from concept to commissioning, all of our clients find a highly qualified and reliable partner in MES team.

- DESIGN AND ENGINEERING
- CIVIL WORKS
- SECONDARY CONTAINMENT AND LEAK DETECTION SYSTEMS
- PAINT AND COATINGS
- MECHANICAL AND PIPING
- LOADING RACKS
- ELECTRICAL AND INSTRUMENTATION
- COMMISSIONING



STORAGE TANKS

MES Engineering Tech is a leading contractor in tank engineering, fabrication, construction, modification, maintenance, and repair as well as relocation of aboveground storage tanks and specialty vessels.

Our capabilities cover a full spectrum of services associated with the atmospheric and pressurized tanks for liquid, gas and bulk storage, and turnkey terminals.

Meeting today's storage challenges has always been one of the MES Engineering Tech.

MES Engineering crews respond rapidly and efficiently to meet the demands of even the most complex projects.

We routinely employ discovery methods that decrease costs on materials to meet the budget requirements without ever compromising safety or quality.

Our professional staff has proven expertise in all areas of the tank and specialty vessel installations and modifications. Over the years many pioneering features have been developed by our in-house team and successfully incorporated into existing projects.





STORAGE TANKS CONSTRUCTION CAPABILITIES

- ◆ Fixed roof or open top flat bottom storage tanks built to API -650, sized from 1,000 BBLS to 150,000 or more barrels. Smaller tanks are available built to API 12D specifications.
- ◆ Fixed roof flat bottom low-pressure tanks built to API-620; 1,000 BBLS and up. Silos or hoppers for granular products, 200 tons capacity to 5,000 tons or more.
- ◆ Fire protection water storage tanks built to NFPA or FM specifications; 30,000 gallons and up.
- ◆ Portable or industrial water storage tanks built to AWWA D100 standards; 30,000 gallons to 20,000,000 gallons or more.
- ◆ Repair, relocation, or structural modification of welded steel tanks. Welding thickness capability is limited only by API or AWWA standards.
- ◆ We are the industry leader in the field erected welded steel flat bottom tanks, including all related services, like miscellaneous shop fabrication of appurtenant items and internal or external steel floating roofs and more.

MES Engineering brings you the highest standard of quality, service, and expertise. Our exceptional combination of capability and flexibility allows us to solve any of the challenges of your storage and vessel projects, from early concept through the entire design-build process.

EXPERIENCE

- ◇ CONE ROOF AND BOTTOM TANKS
- ◇ OPEN TOP FLOATING ROOF TANKS
- ◇ INTERNAL FLOATING ROOF TANKS
- ◇ DOME ROOF TANKS
- ◇ UMBRELLA ROOF TANKS
- ◇ KNUCKLE ROOF TANKS
- ◇ SLOPED/DISHED BOTTOM TANKS
- ◇ ASME PRESSURE VESSELS



MECHANICAL AND PIPING

MES Engineering Tech is Mechanical and Piping Services Division offers turn-key solutions for industrial piping applications and equipment installation

Our skilled field personnel have proven experience in the engineering, construction, and fabrication of specialized mechanical and piping systems for institutional and commercial construction. MES Engineering brings quality, efficiency and comprehensive set of services encompassing projects pre-assembly, design, procurement, project management, and scheduling.

We understand the challenges faced by today's industry: the need to reduce operational costs, maximize uptime and optimize efficiency. We ensure the highest level of asset integrity and reliability to our clients. We create a solid plan detailing all aspects and risks associated with a particular project to assure reliable production, quick turn-around, and safety. MES Engineering typical projects include:



- ◆ **ASME / NBIC works.**
- ◆ **Balance of plant and Welding and metal fabrication.**
- ◆ **Orbital process pipe welding.**
- ◆ **Process equipment installation.**
- ◆ **Chilled water lines for HVAC.**
- ◆ **Pipe fabrication and installation in small bore and large bore all type of piping:**



WE HAVE EXPERTISE IN THESE MATERIALS:

- ◇ **STAINLESS STEEL**
- ◇ **DUPLEX STAINLESS**
- ◇ **CHROME ALLOYS**
- ◇ **CARBON AND MILD STEEL**
- ◇ **NICKEL ALLOYS**
- ◇ **GI PIPE**
- ◇ **ALL TYPES OF PIPES**





STEEL FABRICATION

MES Engineering Tech delivers in-house quality assurances and state-of-the-art equipment for burning, bending and rolling of stainless-steel materials and carbon steel.

Our steel fabrication division provides thousands of tons of top-quality structural steel projects annually to construction, manufacturers and other firms throughout various project in Bangladesh. All our functional designs are built and with the highest quality materials and the best workmanship available in today's marketplace.

MES Engineering facilities allow the output of large structures under limited timeframes with top efficiency. We fabricate and Erection lot of Steel structure Project in Bangladesh. Our site has superior provisions for transportation access and allows us to provide our customers with highly reliable and practical truck and barge shipping options

○ STEEL FABRICATION

○ ERECTION

○ COATINGS

○ PLATFORMS

○ STAIRWAYS

○ CAGED LADDERS

○ RAILINGS

○ HANDRAILS

○ PLATE WORKS

○ DUCTS AND TRANSITIONS

○ LOUVERS AND DAMPERS

○ SUPER STRUCTURES AND STRUCTURAL

○ MODULAR STEEL CONSTRUCTION

○ SUPPORTS

○ STACKS

○ COLUMNS

○ PRESSURE VESSELS

○ SCRUBBERS

○ PROCESS PIPING

○ SQUARE STORAGE
CONTAINMENT

○ DUCTWORK

○ DRUMS

○ TRAY TOWERS

○ CONVECTION BOX

○ FLARE TIPS

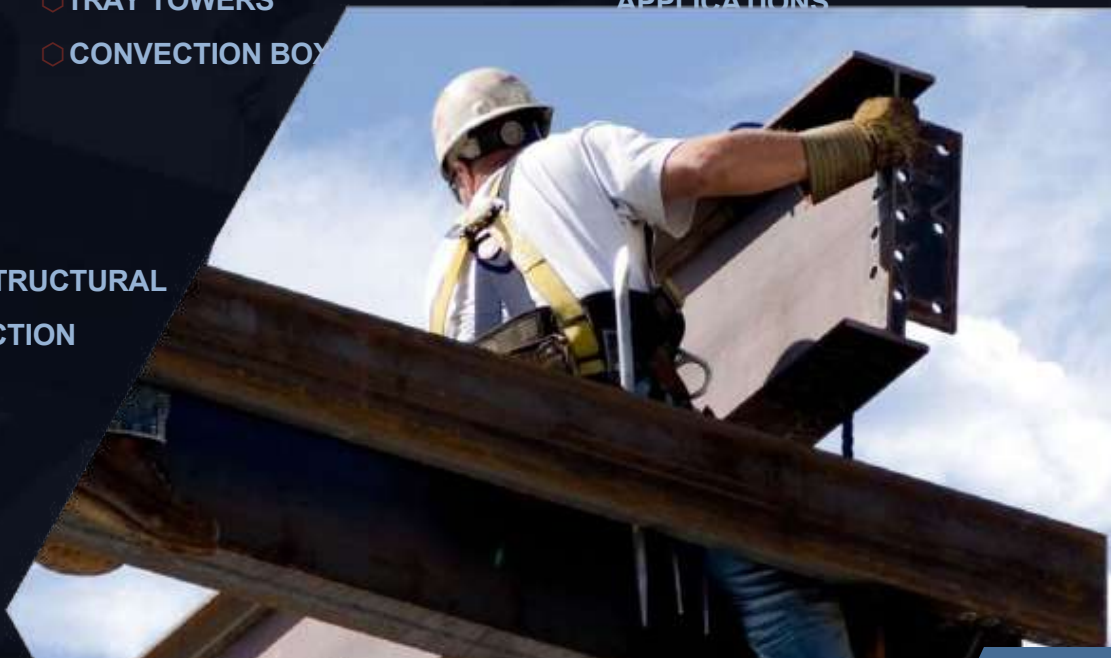
○ BURNER ASSEMBLIES

○ ABSORBERS

○ AIR RECEIVERS

○ FLOATING ROOFS

○ STEEL RETROFIT
APPLICATIONS



CONSTRUCTION

MES Engineering Tech expert managing team, experienced fabricators, and qualified workforce keep your general construction projects on time and within budget.

MES Engineering provides general construction services for new installations, facility upgrades, renovation or other specialized industrial, commercial and government projects. All project follows required specifications and are completed in a timely and costs effective manner regardless of size, budget or timeline. Our team's strong committed to excellence is backed by many years of extensive experience. We strive to deliver only the highest quality in every project.

Whatever your project entails we have the qualified manpower and relevant experience. We offer solutions that are efficient, safe, functional and cost-effective.

We make sure that the delivered services or end products not meet all the requirements and specifications, but also create organizational value by fulfilling client's short-term goals in alignment with their long-term strategy.



SCOPE OF SERVICES:

- NEW BUILDINGS
- STRUCTURAL STEEL
- REMODELING
- TURN KEY PROJECTS
- ELECTRICAL SYSTEMS
- PLUMBING & PIPING
- CHILLERS
- COOLING TOWERS
- AIR CONDITIONING
- GENERATORS
- VALVES
- PUMPS
- GREEN BUILDING
- AND MORE

FABRICATION



MES delivers comprehensive, integrated design, procurement, and construction. Our flexible approach to fabrication solutions greatly improves capital efficiencies in a variety of industries.



MES is one of the industry's leading providers of structure, piping solutions, storage tanks and vessels for the oil and gas, water and wastewater, and power generation industries.

Our modern facilities are equipped with the latest manufacturing technologies that significantly reduce costs, help maintain safety and the deliver the highest quality end product. Our team comprises of highly skilled pipefitters, welders, structural fabricators, electricians and instrument technicians, and managers who can expertly streamline even the most complex project from concept to delivery.

MES Engineering brings the qualified manpower, extensive knowledge and professional project management all of which allow us to maximize the cost effectiveness of our custom fabrication solutions.



BENEFITS OF FABRICATION

- ADVANCED SOURCING METHODS
- EARLY FABRICATION ALLOWS RE-DESIGN AND IMPROVES CONSTRUCTABILITY
- COLLABORATION
- ENVIRONMENTAL BENEFITS
- MODULARIZATION OF DESIGNS FOR EASY OFFSITE INSTALLATION
- QUALITY ASSURANCE CONTROL
- LOGISTICS
- AND MORE



FIRE PROTECTION SYSTEMS

MES Engineering Tech is a quality industry provider of fire protection services that meet the insurance and certification requirements set by the National Fire Protection Association (NFPA).

We specialize in a custom design, fabrication, installation, and support of fire protection systems, including sprinkler systems in the commercial and industrial markets. Our systems and services are backed by our experienced staff, innovation, and time-tested quality work.

At MES Engineering we understand the importance of fire safety in protecting the lives of your personnel, as well as the investments, assets, and continuity of your business. Whether you need a qualified company to provide fire protection system design or

contractor services for your industrial or commercial structure, healthcare facilities, power plant, refinery or new business development, we are here to serve you.

We provide high-performance fire safety systems giving you the competitive edge in today's industry. Entrust your facility's fire protection system design, contractor services, and suppression systems to MES, and let our qualified personnel assist you throughout your project





FIRE SPRINKLER SYSTEMS DESIGN AND INSTALLATION

At MES, our designers and engineers continually pursue the best and most efficient design methods to help each project perform seamlessly. To deliver this, we cooperate with local and national insurance authorities presenting to them the modern designs up to date on NFPA codes. We work diligently to coordinate all project's details avoiding any field changes that could result in costly delays. To prevent such risks, we subject all equipment to an investigation of the market advantages, risks, and costs, and always stay apprised of all new and upcoming products.

If your new or existing facility is a cold storage facility or requires an ESFR (Early Suppression Fast Response) sprinkler installation, our experienced engineers and field staff can help design and install the best solution.



FIREALARM SYSTEM

We work carefully with top architects, engineers, and electrical contractors to ensure that your company's fire alarm systems meet the requirements of NFPA 72.

We install the industries best and highly respected fire systems that meet the particular industry's flexibility, performance and reliability requirements. Moreover, we can assist you at every step: from planning, installation, to execution of all code required monitoring, testing, and inspections.



FIRE PUMPS

Fire pumps are an intricate part of a business's fire protection and prevention system. Their role is vital in the situation when the municipal water supply is not capable of providing the pressure sufficient to meet the hydraulic design requirements of your company's sprinkler system. Unfortunately, this is quite common in the case of high-rise buildings, which require a tremendous amount of pressure and a larger flow of water. Let MES help you in planning and designing of the fire pump requirements for your structures. We work with horizontal split case pumps, vertical split case pumps, vertical inline, vertical turbine or end suction pumps among others. Our highly knowledgeable staff can advise you in choosing the appropriate pump needed for your fire prevention system design.



FIRE SPRINKLER INSPECTIONS AND ALARM TESTING

MES maintains a staff of highly trained fire sprinkler and alarm specialists that are duly certified and customer focused. Let us assist you in the required periodic inspection of your sprinklers, hose outlets and fire pumps alarm systems and any other requirements enforced by NFPA 25 and NFPA 72.

Any imperfections found are always reported to the business owner, followed up with suggested solutions best suited to correct such impairments.

FIRE PROTECTION AND REPAIR



MES Engineering service and repair technicians offer 24/7 rapid response time for complete fire protection system repairs and maintenance. Our philosophy when it comes to fire protection and safety is proper planning and routine fire protection maintenance. The excellent track record of our solutions can be directly attributed to this approach.

Let us assist you in preventing unnecessary risks or malfunctions associated with your company's fire protection. Should you need urgent assistance, we are here to provide emergency **services**.

FIRE DOORS

Let MES specialists assist your company in fire doors planning, installation, and maintenance. Fire doors are available in various shapes, sizes,

and security specifications. Selecting the appropriate fire doors plays a principal role in structural fire protection and fire safety. Expertly planned fire doors help delay the spread of fire from one unit to another within the structure.

We offer diverse products and services to design and execute the solutions that fit the requirements and specifications of your particular project. We can help you achieve a safer and more efficient fire protection system for your business



SPECIAL HAZARDS SUPPRESSION SYSTEM



Special Hazard Suppression Systems are designed for such applications when adding water into an environment creates serious harm. A prime example of water systems creating more harm than good is in the case of most electronics and manufacturing equipment. Moreover, installing a special hazard system suppresses a fire without damaging your company's structures or manufacturing equipment.

We provide specialized suppression systems for the businesses with special-hazard or high-hazard facilities, which meet insurance and local/national code requirements and ensure fires can be extinguished quickly.

CORROSION MANAGEMENT

Our professional corrosion management services include internal corrosion assessments and de-

sign services for the corrosion management. MES is dedicated to providing customers with the most accurate evaluation and forecasting of the corrosion in your fire prevention system.

Whether you are currently suffering the effects of corrosion, or are seeking preventative measures against it, our specialists can identify and manage the various types of corrosion within the water-based fire sprinkler systems.



FIRE PROTECTION SYSTEM

Fire protection systems are effective, easy to use, and safe for people, key assets, facilities and the environment. Whether your needs are industrial, commercial or special hazard applications, we've got you covered..

Extensive Engineering & Service provide full Fire Protection System such as Fire Hydrant System, Automatic Sprinkler System and so on.



TY-B

Upright, Pendent & Recessed Pendent

- All hazard
- 5 mm bulb
- Discharges a hemispherical water spray pattern in the area beneath the sprinkler
- Small frame, narrow profile bulb



K FACTOR	K=5.6 (80,6), K=8.0 (115,2)
THREAD SIZE	1/2" NPT • 3/4" NPT
ESCUTCHEON	Style 10 • Style 40
ESCUTCHEON FINISH	White Coated, Chrome Plated, Brass Plated
SPRINKLER FINISH	Natural Brass, Chrome Plated, White Polyester, Lead Coated, Wax Coated, Wax over Lead Coated
SIN	TY3151, TY3251, TY4151, TY4251, TY4851, TY4951
TECH DATA	TFP151



EMCO Fire Protection





FIRE ALARM & DETECTION SYSTEMS(CFDS)

There are a vast array of fire detection systems and devices on the market today, ranging from the relatively simple to the most technically sophisticated. Modern automatic fire detection systems are available in two types, conventional and addressable - which, broadly speaking, tend to be used in smaller and larger installations respectively.

CFDS DEVICE		
SL No.	Description of Items	Listed/Approval
1	Analogue addressable fire alarm control panel	UL Listed/ FM Approved
2	Addressable Smoke & Heat Detector (Multi)	UL Listed/ FM Approved
3	Addressable Optical Smoke Detector	UL Listed/ FM Approved
4	Addressable Heat Detector	UL Listed/ FM Approved
5	Addressable Manual Call Point MCP	UL Listed/ FM Approved
6	Conventional Sounder With Strobe	UL Listed/ FM Approved
7	Module (Input)	UL Listed/ FM Approved
8	Module (Output)	UL Listed/ FM Approved

FIRE RATED CABLE

SL No.	Description of Items	Certification
1	2.5rm FR Cable	3rd Party
2	1.5rm FR Cable	3th Party



apollo

Context Plus

COOPER

Honeywell

AV
ASENWARE

Simplex

EATON

RAMCRO
Specialty Cable

FIRE GUARD



- ◇ PIPE WELDERS
- ◇ STRUCTURAL WELDERS
- ◇ PIPELINE WELDERS
- ◇ PIPEFITTERS
- ◇ STRUCTURAL FITTERS
- ◇ IRON WORKERS
- ◇ PROFESSIONAL ENGINEERS
- ◇ FITTERS
- ◇ CERTIFIED WELDERS
- ◇ PAINTERS
- ◇ LOADERS
- ◇ SHOP MANPOWER
- ◇ CERTIFIED WELDING SUPERVISORS



CERTIFIED AND QUALIFIED MANPOWER

MES provides project-based multi-disciplined manpower and workforce solutions to diverse industrial and Power sectors.

With increasing complexity in today's industry and specific demands changing from project to project it is of the utmost importance to work with specialized professionals. Hiring MES Engineering Tech manpower services ensures that each task in your project is executed by the adequately qualified and certified workforce.

Our professional staff represents all of our core principles and has been a single most important factor in making MES the industry leader it is today. With our highly skilled personnel to supervise, coordinate, weld or to complete many other specialized tasks you can efficiently and seamlessly complete even the most demanding projects.

We can connect your project with the industry's highest quality staffing services and manpower support whether it requires technical experts, skilled workers or laborers.

We serve both large and small organizations across all industry sectors. All our manpower strictly adheres to all industry codes of safety and all requirements of the industry.

Whether it is on or above ground pipeline, underground pipeline, structural steel platforms, plant maintenance or any other project, MES can assemble a multi-skilled team that is perfectly suited for the scope of work.



MANPOWER

SL No	Human Resource	Persons
1	B.S.C Engineer (Mechanical & Electrical)	6
2	B.B.A (Marketing Executive)	4
3	Diploma Engineer	10
4	Architects & Designer	1
5	Admin Department	6
6	Safety Officer	2
7	Accountant Department	3
8	Technical Supervisor	3
9	Technical Foreman	4
10	Technical Head Fitter	7
11	Technical senior & Junior Fitter	14
12	Senior & Junior Helper	28
13	Arc Welder	4
14	Gas Welder(Tig & Mig)	6
15	Sheet Metal Jacketing	6
16	Painter	2

MACHINE TOOLS LIST

SL No	Name of Machine Tools	QTY
1	Welding Machine (DC & AC with 500,400,315 Amps)	25
2	Gas Cutter Set	7
3	Gas Welding Machine (Tig & Mig)	14
4	Power Hacksaw	2
5	High Speed Cutter	12
6	Grinding Machine	20
7	Hammer Drill Machine	18
8	Drill Machine (Hand, Table Drill & Magnet Drill)	12
9	Pipe Range Set	20
10	Power Screw Gun Set	10
11	Adjustable Range set	12
12	O ₂ Bottle (Set)	14
13	Argon Gas Bottle (Set)	10
14	Moveable & Fixed vise	4
15	Chain Pulley (3/5/10/ Tons)	12
16	Ring Set	14
17	Socket Range Set	13
18	Pipe line flashing Pump	6
19	Hydraulic Testing Machine	4
20	Hydraulic & Mechanical Press Machine	1
21	Hydraulic Crane	1
22	Man Lift	2

CLIENT



Summary of our client's

S/L	COMPANY NAME
1	Coats Bangladesh Limited
2	MNR Design Limited (MNR Group)
3	SQ Birichina Ltd. (SQ Group)
4	SQ Celsius Ltd. (SQ Group)
5	SQ Hues Ltd SQ Group
6	Crony Apparels LTD. (Crony Group)
7	Bea - Con Knit Wear Limited
8	Oxford Shirts LTD. (Pretty Group)
9	D & S Pretty Fashions LTD (Pretty Group)
10	Abanti Color Tex LTD (Crony Group)
11	Sparrow Apparels LTD. (ACL Group)
12	Crown wears (PVT) LTD. (ACL Group)
13	Norp Knit Industries LTD.
14	Epyllion Textile LTD. (Epyllion Group)
15	Bengal Hurricane Dyeing & Printing LTD. (Bengal Group)
16	Ama Syntex LTD.
17	Nice Cotton LTD. (Labib Group)
18	Astex Garments LTD
19	Libas Textile LTD.
20	Fashion Craft Knit Wear LTD
21	Comfit Textiles Limited
22	Palmal Group
23	Icon Exchange India Ltd (Rampal Power Plant)
24	SunTex BD Limited (Shahin Group)
25	Water Next Solution



বহি নম্বর - খ

012228 গাজীপুর সিটি কর্পোরেশন

রাজস্ব বিভাগ
গাজীপুর, বাংলাদেশ।



লাইসেন্স ইস্যুর বিবরণ		
ওয়ার্ড নম্বর	ইস্যুর ত্রৈমিক নম্বর	ইস্যুর তারিখ
৩৬	৬২৬	০২/৪/১৬

স্মারক নং - ২৫৬৩৬



ট্রেড লাইসেন্স (TRADE LICENCE) (সাধারণ)



স্থানীয় সরকার (সিটি কর্পোরেশন) আইন, ২০০৯ (২০০৯ সনের ৬০ নং আইন) এর ধারা ৮৪ এর প্রদত্ত ক্ষমতা বলে সরকার প্রণীত সিটি কর্পোরেশন আদর্শ কর তফসিল, ২০১৬ এর ১০ অনুচ্ছেদ অনুযায়ী পেশা, ব্যবসা-বাণিজ্য এবং জীবিকা-বৃত্তির উপর আরোপিত কর আদায়ের লক্ষ্যে নিম্নলিখিত ব্যক্তি/প্রতিষ্ঠানের অনুকূলে অত্র ট্রেড লাইসেন্সটি ইস্যু করা হলো। যাত্র কার্যকরিতার মেয়াদ অত্র ট্রেড লাইসেন্স এর ৪ ও ৫ নং পৃষ্ঠায় উল্লেখিত সময় পর্যন্ত বলবৎ থাকবে।

- ১। মালিকের নাম : মঃ জেব মাহুদ
- ২। পিতা/স্বামীর নাম : মঃ জামি-মাহুদ
- ৩। মাতার নাম : হুসনা
- ৪। মালিকের ঠিকানা : _____

বর্তমান বসবাসের ঠিকানা

হোমিং নং :

রোড নং :

খানা :

পাঞ্জীপুত্র :

পোস্ট কোড :

স্থায়ী/রেজিস্টার্ড ঠিকানা

হোমিং নং/গ্রাম :

রোড নং/পোস্ট অফিস :

খানা :

জেলা :

- ৫। ব্যবসা প্রতিষ্ঠানের নাম : ডব্লিউ.ই.এম. ইঞ্জিনিয়ারিং ট্রেড
- ৬। পরিশোধিত মূলধন (সি/কোম্পানীর ক্ষেত্রে) : টাকা _____
- ৭। ব্যবসা প্রতিষ্ঠানের ঠিকানা : গৌন্দুল হোল, চান্দন্য চৌরাস্তা, গাজীপুর - মধ্য ময়দা
- ফোন ও ই-মেইল (যদি থাকে) : _____
- ৮। ব্যবসার ধরণ : মার্বলারিং - (হিটাজ)
- ৯। ট্রেড লাইসেন্স/নবায়ন ফি : ১৫০০/-
- ট্রেড লাইসেন্স বকেয়া ফি : ১২২৫/-
- সাইনবোর্ড কর : ২০০/-
- ভ্যাট : ২২৫/-
- অন্যান্য : _____
- জরিমানা : _____
- মেট : ৬৮২০/- টাকা (কথায় : ষোল্ল হাজার আটশত মত্ৰাশত টকা)

লাইসেন্সধারীর স্বাক্ষর হতে সকল বকেয়া পাওনা বশির্দ নম্বর _____ তাই ২৬/১২/১৬ এর মাধ্যমে আদায় করা হয়েছে।

[Signature]
লাইসেন্স পরিদর্শক/প্রদাতকর্তা
(নাম ও পদবীসহ সীল)

[Signature]
রাজস্ব কর্মকর্তা/লাইসেন্স কর্মকর্তা
(নাম ও পদবীসহ সীল)
মোঃ মজিবুর রহমান
লাইসেন্স কর্মকর্তা

মোঃ আশ্রাফ হোসেন
কর্তৃপক্ষের পরিদর্শক (প্রশাসনিক)
গাজীপুর সিটি কর্পোরেশন

মোঃ মজিবুর রহমান
লাইসেন্স কর্মকর্তা
গাজীপুর সিটি কর্পোরেশন



Government of the People's Republic of Bangladesh

National Board of Revenue

Taxpayer's Identification Number (TIN) Certificate

TIN : 868189121031

This is to Certify that **Md. Abu Sayed** is a Registered Taxpayer of National Board of Revenue under the jurisdiction of Taxes Circle-004 , Taxes Zone Mymensingh.

Taxpayer's Particulars :

- 1) Name : **Md. Abu Sayed**
- 2) Father's Name : **Md.Amin Mollah**
- 3) Mother's Name : **Sabura**
- 4.a) Current Address : **charkatari, Daulatpur, Manikganj, PO : 1860**
- 4.b) Permanent Address : **charkatari, Daulatpur, Manikganj, PO : 1860**
- 5) Previous TIN : **Not Applicable**
- 6) Status : **Individual**

Date : March 04, 2018



Please Note:

1. A Taxpayer is liable to file the Return of Income under section 75 of the Income Tax Ordinance, 1984.
2. Failure to file Return of Income under section 75 is liable to-
 - (a) Penalty under section 124; and
 - (b) Prosecution under section 164 of the Income Tax Ordinance, 1984.

Deputy Commissioner of Taxes
Taxes Circle-004
Taxes Zone Mymensingh
Address : Paura Super Market (3rd Floor) KB Ismail Road,
Mymensingh Phone : 091-64203

N. B. This is a system generated certificate and requires no manual signature.

MES ENGINEERING TECH

CONTACT

MES Engineering Tech
MAIN OFFICE Dhaka Road, Chandpur
Bhaban, Gazipur City Corporation,
Gazipur – 1703

PHONE NUMBERS:

+088 -01935101538
+088 - 01749493500
+088-01975101538

Email.:

mes.engineeringinfo@gmail.com

abu.sayed.me90@gmail.com

